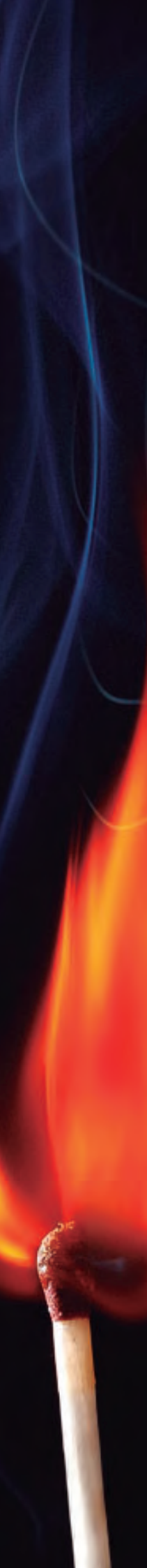


# CONVENTIONAL SYSTEM FIRE DETECTION







# Index

---

What is conventional fire detection?	2
Conventional plants	3
Power supplies	4
Conventional detectors	5
Conventional pushbuttons	6
Extinguishment Posters	7
Sirens and bells	8
Indicators	9
Retainers	10
Extinguishing control panel, batteries and poles	11
Our commitment: services and guarantees	12



## What is the detection of fires conventional?

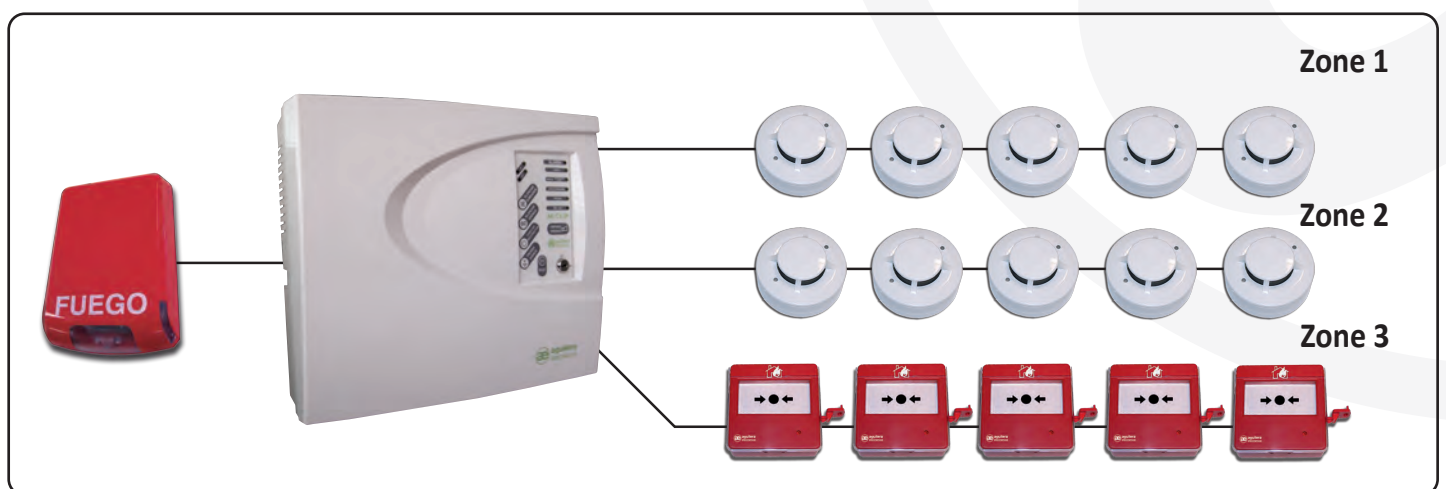
Conventional fire detection is one whose elements (detectors, buttons, etc.) are grouped by zones. When a detection zone goes into alarm, the acoustic and light warning is produced through the alarm devices: sirens, spotlights, indicators...etc.

This type of fire detection installation is the most common in small premises or car parks since, due to the small size of the premises or its diaphanous nature, it is not difficult to locate the element in alarm, although the control unit tell us only the area where the alarm occurs and each of these areas houses a relatively high number of detectors.

Conventional fire detection installations are designed for maximum duration and simple maintenance.

***The conventional system  
fire detection  
It is indicated for small  
and medium facilities***

### Conventional installation concept



Detection is done by loops/detection zones.  
Signals: breakdown, pre-alarm and alarm.

# Control Panels

## Characteristics common to all the plants

- Maximum 30 detectors per zone
- Unlimited number of buttons per zone.
- Manual activation of evacuation alarm.
- Access level control by key.
- Individual disconnection of detection zones and siren.
- Zone test mode by a single operator.
- Alarm relay with voltage-free output.
- Fault relay with voltage-free output.
- 2 supervised siren circuits with fault indicator.
- Active end of line.
- CE certified according to EN 54 parts 2 and 4.

## Certificates



## 2 detection zones

- 2 conventional detection zones.
- Supply voltage: 230V +-10%
- You only need a 12V / 7Ah battery
- Siren output 1 and 2: 24 Vdc
- Auxiliary output: 24 Vdc
- Working temperature: 0 to 40°C
- Storage temperature: -20 to 60°C
- Humidity: 0-95%



AE/C5-2P

## 4 detection zones

- 4 conventional detection zones.
- Supply voltage: 230V +-10%
- You only need a 12V / 7Ah battery
- Siren output 1 and 2: 24 Vdc
- Auxiliary output: 24 Vdc
- Working temperature: 0 to 40°C
- Storage temperature: -20 to 60°C
- Humidity: 0-95%



AE/C5-4P

## 8, 12 y 16 detection zones

- Modular capacity for 8, 12 or 16 conventional detection zones.
- Active end of line.
- Guarded evacuation exits.
- Fire and breakdown relay.
- Zone test mode.
- Control keys and status indication leds.
- Capacity for a 12V/17 Ah battery.
- Modular capacity for 4 cards with 4 detection zones and/or 4 evacuation zones.
- Dimensions: 462 x 345 x 120mm



AE/C5-8-16

# Power supplies

## 2A/24Vdc Switched power supply

- Dual voltage 230/115 Vac; 50/60Hz
- 2 independent outputs protected against short circuits.
- Luminous indicators of the general status and charge of the batteries.
- Capacity for 2 12V/17Ah batteries.
- Dimensions: 272x320x125mm.



AE/FL-2A

## 5A Switching power supply

- Dual voltage 230/115 Vac; 50/60Hz
- 2 independent outputs protected against short circuits.
- Luminous indicators of the general status and charge of the batteries.
- Capacity for 2 12V/17Ah batteries.
- Dimensions: 440x390x100mm.



AE/FL-5A

## 8A High capacity power supply

- Maximum output current of 8 A.
- 2 independently protected power outlets.
- Real-time monitoring of complete system status.
- Temperature compensation.
- Capacity for batteries up to 48 Ah.
- Dimensions: 408x408x224mm.



AE/FL-8A

## 12A High capacity power supply

- Maximum output current of 8 A.
- 2 independently protected power outlets.
- Real-time monitoring of complete system status.
- Temperature compensation.
- Capacity for batteries up to 48 Ah.
- Dimensions: 408x408x224mm.



AE/FL-12A

## Certificates

EN 54-4



# detectors

## Characteristics common to all detectors

- Attractive design.
- Low profile.
- SMD technology.
- Remote alarm output.
- Same interchangeable base for easy connection.

## Certificates

EN 54-4

EN 54-7

Depending on model



## Optical smoke detector

- Plinth and dust cover included
- 2-wire connection.
- Power supply between 15 and 35 Vdc.
- Consumption: 35uA (rest), 80 mA (alarm).
- Diameter: 99mm.
- Height including base: 46 mm.
- Double LED.



AE/C5-OP

## Optical-thermal detector

- Plinth and dust cover included
- 2-wire connection.
- Power supply between 15 and 35 Vdc.
- Consumption: 35uA (rest), 80 mA (alarm).
- Diameter: 99mm.
- Height including base: 61 mm.
- Double LED.



AE/C5-OPT

## Thermovelocimetric detector

- Plinth and dust cover included
- 2-wire connection.
- Power supply between 15 and 35 Vdc.
- Consumption: 35uA (rest), 80 mA (alarm).
- Diameter: 99mm.
- Height including base: 46 mm.
- Double LED.



AE/C5-TV

## Optical smoke detector at 24V

- Made up of a high-sensitivity camera obscura.
- Automatic operation check.
- Tension stabilizer.
- Consumption: 180uA (rest), 22mA (alarm).
- Diameter: 105mm.
- Height including base: 68 mm.



AE002/OP

## 24V Thermovelocimetric detector

- Offers alarm signal when 58 °C is reached.
- Automatic operation check.
- Tension stabilizer.
- Automatic alarm output to connect remote action indicators.
- Consumption: 50uA (rest), 22 mA (alarm).
- Diameter: 105mm.
- Height: 45mm.



AE085/TV

# pushbuttons

## Alarm button with self-check

Equipped with: Microswitch, alarm and self-check LED, verification system with reset key, calibrated plastic sheet so that it locks and does not break.

- Protection cover included.
- Located in ABS box.
- CE certificate issued by LPCB.
- Dimensions: 98 X95X39mm



AE/V-PSAT

## Extinguishing lock button

Button to block the firing of an extinguishing system. Color blue. Indoor use. Serigraphed with the text STOP EXTINCTION.

Equipped with: Microswitch, verification system with reset key, transparent methacrylate protection cover, normally open NO, common C and normally closed NC contacts and calibrated plastic sheet so that it locks and does not break.

Housed in a 98X98X50 mm ABS box



AE/V-PB2

## Extinguishing trigger button

Push button to cause the triggering of an extinguishing system. Yellow color. Indoor use. Serigraphed with the text EXTINCTION SHOT.

Equipped with: Microswitch, verification system with reset key, transparent methacrylate protection cover, normally open NO, common C and normally closed NC contacts and calibrated plastic sheet so that it locks and does not break.

Housed in a 98X98X50 mm ABS box



AE/V-PD2

## Emergency button

Evacuation button designed for installation in emergency exits. Green color. Indoor use.

Equipped with: Microswitch, verification system with reset key, transparent methacrylate protection cover, normally open NO, common C and normally closed NC contacts and calibrated plastic sheet so that it locks and does not break.

Housed in a 98X98X50 mm ABS box.



AE/V-PE

## Water resistant push button guard

Protective cover designed to be tamper-proof to prevent false alarms.

Made of transparent polycarbonate resistant to temperatures between -40°C and +49°C.

Easy to install.



AE/V-SW5

## Certificates





# posters pushbuttons

## Outdoor alarm button

Conventional alarm button indicated for outdoor use, IP65 according to EN 54-11 standard. It has a microswitch with a 470 ohm or 680 ohm load resistance, a check system with a reset key and an alarm LED. It allows the assembly of a calibrated plastic sheet so that it interlocks and does not break or breakable glass, both supplied.

ABS case 85x85x58mm

CE certificate according to CPD. LPCB certificate.

Protection: IP65



AE/V-PSIP

## Outdoor waterproof button

Conventional waterproof push button alarm with IP67 protection. Certified according to EN54-11 standard. It has two independent switches with voltage-free contacts, valid for connecting the button to conventional or algorithmic systems through the corresponding module. The 1-input miniature module can be housed inside. It incorporates a calibrated plastic sheet so that it locks and does not break, a verification system with a reset key and a visible alarm icon that confirms its activation.

Dimensions: 119mm x128mm x 62mm

Operating temperature: - 20°C to + 65°C



AE/V-PSIP67

## Optical/acoustic sign for interior

Indicated for interiors, IP40. You can select solid, intermittent or no sound and fixed or intermittent lighting.

ABS material. Consumption 95mA /24Vdc.

Sound intensity: 108dB /1m.

Dimensions: 365x180x50mm



AE/V-CE

## Optical/acoustic sign for exterior

Indicated for outdoors, IP65. You can select solid, intermittent or no sound and fixed or intermittent lighting.

ABS material. Consumption 95mA /24Vdc.

Sound intensity: 108dB /1m.

Dimensions: 365x 180x50mm.



AE/V-CEIP

## CO sign optical/acoustic sign

Indicated for interiors, IP40. You can select solid, intermittent or no sound and fixed or intermittent lighting.

ABS material.

Dimensions: 365mm x 180mm x 50mm

Consumption 95mA/24Vdc.

Sound intensity 108dB/1m.



AE/V-CECO

# sirens and bells

## 6" alarm bell

6" metal internal alarm bell. Certified according to EN 54-3. Provided with a micromotor to activate the striking mechanism, painted red.

Sound level: 95 dB. Protection: IP21  
Power supply: 24 Vdc. Weight: 0.45Kg  
Consumption: 25mA



AE/V-B6

## Electronic siren with spotlight

Siren with multi-tone spotlight.  
Certified according to EN 54-3.  
Dimensions: Ø 93 mm, height: 80 mm.  
Sound level: 100 dB (tone 3).  
Luminous intensity: > 0.5Cd.  
Consumption: 25mA  
Protection: IP54 (with low base)  
IP65 (with high base)



AE/V-ASF1SB

## Electronic siren

Multitone low consumption siren.  
Certified according to EN 54-3.  
Consumption between 6 and 33 mA, depending on the tone.  
Certified according to EN 54-3.  
Dimensions: Ø 93mm, height: 63mm.  
Sound level: 102 dB (tone 3).  
Protection: IP54 (with low base)  
IP65 (with high base)



AE/V-AS1SB

## Flash

Low consumption flash: 88 mA.  
Luminous intensity 10 Cd.  
Dimensions: Ø 106 mm, height: 91 mm.  
Protection: IP54 (with low base)  
IP65 (with high base)



AE/V-AF1SB

## Siren with spotlight

High acoustic power siren with LED spotlight for indoor use.  
Includes tags: FIRE, FIRE, FIRE  
Certified according to EN 54-3  
24Vdc working voltage  
Maximum consumption: 60mA



AE/V-ASF2

## Outdoor siren with spotlight

Outdoor siren with LED light indication.  
Dimensions: 210 X 230 X 60mm  
Weight: 1.10Kg  
Power supply: 12 – 30 Vdc  
Consumption: 90mA at 24Vdc  
Protection: IP65



AE/V-ASFE

## Certificates



## Certificates



# Extinction panel indicator

## Indoor remote alarm indicator

Surface alarm indicator with wide viewing angle.

Technical characteristics:

Power: 12 / 24 Vdc.

Maximum consumption: 20mA.

Measurements: 65x65x35mm

AE/V-IAR



## Extinguishing control panel

Developed and manufactured by Aguilera Electrónica according to UNE EN12094-1 Standard

Characteristics:

- 2 supervised detection zones.
- Programmable operating mode as:
  - Double detection: Two alarms in one zone.
  - Cross Detection: One alarm in each zone.
  - Mixed: Two alarms on the panel.
- Supervised detection zone for extinguishing trigger button.
- Supervised input for extinction stop button.
- Extinguishing trigger and stop buttons incorporated in the panel.
- 2 independent monitored inputs for pressure switch supervision or weighing control and flow control.
- Guarded evacuation exit and exit for firing poster.
- Mode selection key: automatic, manual or disarmed.
- Display with indication of the remaining time for downloading.
- Exit time before extinction programmable between 0 and 60 seconds.
- Optional relays to repeat the states of the control panel.
- Dimensions: 320 x 272 x 125 mm.
- It can hold 2 12V/7Ah batteries.



AE/PX2

# Retainers

## Wall mount retainer

50 Kg/490N wall-mounted retainer, release button, traction plate, 2 protection diodes.

EN 1155 certified

Protection: IP40

Consumption: 45mA 24Vdc



AE/V-R2450P

## Retainer to embed

50 Kg/490N retainer in aluminum box for embedding, traction plate, 2 protection diodes.

EN 1155 certified

Protection: IP40

Consumption: 45mA 24Vdc



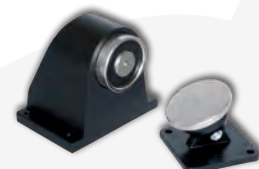
AE/V-R2450E

## Floor retainer

50 Kg/490N retainer for floor in aluminum box, with traction plate, release button, 2 protection diodes. EN 1155 certified

Protection: IP40

Consumption: 45mA 24Vdc



AE/V-R2450F

## Retainer 50 Kg for floor extension arm

50 Kg/490N floor retainer with extendable arm from 15 to 18 cm or 30 to 33 cm, with traction plate, release button, 2 protection diodes. EN 1155 certified

Protection: IP40. Consumption: 45mA 24Vdc



AE/V-R2450B15/ AE/V-R2450B30

## Retenedor 100 kg para suelo brazo extensible

Retenedor 100 Kg/980N para suelo con brazo extensible de 15 a 18 cm, con placa de tracción, pulsador de desbloqueo, 2 diodos de protección. Certificado EN 1155

Protección: IP40. Consumo: 45mA 24Vcc



AE/V-R24100B15

## Recessed emergency door retainer

Traction force: 300 Kg / 2490 N

Door status monitoring.

Protection: IP40

Consumption: 24V 250mA. Weight: 1.82kg



AE/V-RPE300E

## Door retainer 300 or 500 Kg

Traction force: 300 or 500 Kg / 2490 N

Door status monitoring.

Protection: IP40

Consumption: 24V 250mA

Weight: 2.02Kg



AE/V-RPE300/ AE/V-RPE500

# Poles Batteries Retainers

## Retainer for fire doors for 100 and 50 Kg

Formed by an encapsulated electromagnet, provided with a central pivot that ejects the door when it must be closed and a traction plate with an adaptation ball joint, which facilitates the correct retention of the door.

Housed in a white lacquered aluminum box, equipped with a manual button that cuts off the electromagnet power supply, releasing the door leaf, which will close under spring pressure. EN 1155 certified.



AE/V-R2440  
AE/V-R24100

## Retainer with selector

Retainer with blade selector, located in an aluminum box with traction plate, release button and 2 protection diodes. EN 1155 certified.

Traction force: 50 Kg / 490 N

Consumption: 83mA at 24V.

Measurements: 95x95x30 mm



AE/V-R2440S

## Rechargeable batteries

Maintenance-free lead-acid type rechargeable batteries.

De 12 V / 1,2 Ah mod. B/12-1,2

De 12 V / 2 Ah mod. B/12-2

De 12 V / 7 Ah mod. B/12-6

De 12 V / 17 Ah mod. B/12-15

De 12 V / 24 Ah mod. B/12-24



## Detector test sticks

Head for AE/V-PT1 smoke detectors.

Formed by a transparent cylindrical chamber that can tilt on its fork and allows to see the activation of the detector. In the lower part of the chamber there is a hole in which the smoke pot is housed. The discharge of the gas is caused by a slight pressure of the chamber against the ceiling.

Synthetic smoke bottle. AE/V-PTB1.

Head for Thermal and Thermovelocimetric Detectors. AE/V-PT2 pole with a similar construction to the previous one but with a heating element and a fan motor. Working temperature 100 °C and nominal voltage of 220 Vac.

1.15 m fiberglass extension section (AE/V-PTT1.15).



AE/V-PT1  
AE/V-PTB1  
AE/V-PT2  
AE/V-PTT1.15

## Our commitment: services and guarantees



### Projects

The Aguilera Group offers its collaboration to engineering companies in fire detection, control and extinction projects, advising on the systems and coverage for each building. The projects department carries out the design and dimensioning of the system, the hydraulic calculations, the calibration of the diffusers and the installation isometric, advising on the effectiveness of the equipment in each risk and considering the operability in the maneuvers.



### Training

Aware that we all want to know and control what we do, regardless of the technical support we provide to the installations that run with our products, the Aguilera Group offers training courses on the operation of our equipment, its installation and programming.



### Personal attention

At the Aguilera Group, each client is important. We are aware that not all of us have the same needs. For this reason, our team of professionals provides personal attention tailored to your requirements.



### Maintenance

The Aguilera Group is committed to guaranteeing repair services, reprogramming and supply of original spare parts after the warranty period.



### Technical service

With the aim of guaranteeing the proper functioning of the facilities, the Aguilera Group's technical department carries out the operation tests and commissioning of the equipment, in addition to collaborating with the installer in all phases of the work. Once the system is installed with the adequate water and electricity supply and the hydraulic test having been previously carried out, the Aguilera Group's technical personnel carry out the operation test and start-up of the equipment.



### Equipment Warranty

The Aguilera Group guarantees the proper functioning of its equipment for 2 years from the date of delivery; We are responsible for the replacement or repair of those in which anomalies or manufacturing defects are observed and are delivered to our factory in Madrid.





SEDE CENTRAL

C/ Julián Camarillo, 26 - 2ª planta - 28037 MADRID • Tel: 91 754 55 11

FACTORÍA DE TRATAMIENTO DE GASES

Av. Alfonso Peña Boeuf, 6. P. I. Fin de Semana - 28022 MADRID • Tel: 91 312 16 56

DELEGACIÓN GALICIA

C/ José Luis Bugallal Marchesi Nº 9, 1º B - 15008 A CORUÑA • Tel: 98 114 02 42

DELEGACIÓN CATALUÑA

C/ Rafael de Casanovas, 7 y 9 - SANT ADRIA DEL BESOS - 08930 BARCELONA • Tel: 93 381 08 04

DELEGACIÓN LEVANTE

• Tel: 628 92 70 56

DELEGACIÓN ANDALUCÍA

C/ Industria, 5 - Edificio Metropol 3, 3ª Planta, Mod. 17. P.I.S.A. 41927 Mairena del Aljarafe - SEVILLA

• Tel: 95 465 65 88

DELEGACIÓN CANARIAS

C/ Sao Paulo, 17 - Pol. Ind, El Sebadal - 35008 LAS PALMAS DE GRAN CANARIA • Tel: 928 24 45 80

[www.aguilera.es](http://www.aguilera.es) • e-mail: [comercial@aguilera.es](mailto:comercial@aguilera.es)